

DIFFERENT FITS



MENS SLIM FIT

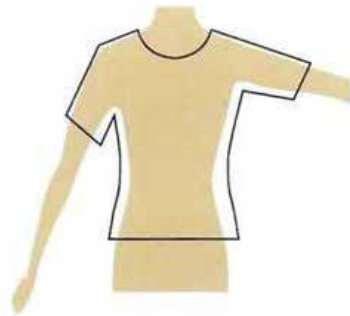


LADIES SLIM FIT

Shaped to the body. Get a semi-fitted look by buying one size up.



MENS MODERN FIT

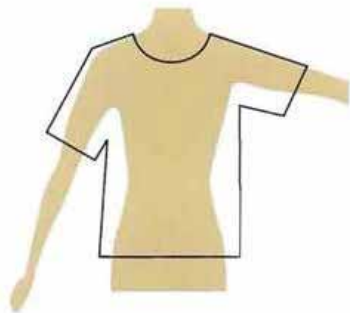


LADIES MODERN FIT

Follows the shape of the body with ease added for movement.



MENS EASY FIT



LADIES EASY FIT

Fit with extra ease for movement. Falls free from the body.